

عشاء

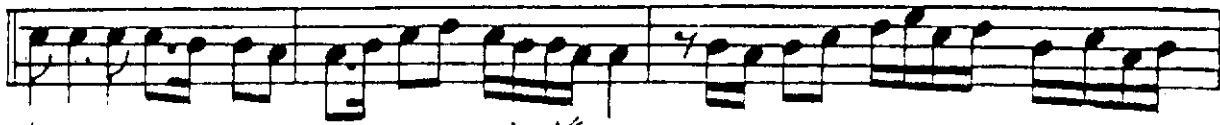
*Uchak*

دوبل

The second staff of music begins with a treble clef, a key signature of one sharp (F#), and a time signature of 4/4. The melody continues from the first staff, starting on G4 and moving through various intervals, including eighth and sixteenth notes.

A single staff of music containing a sequence of notes and rests. The notes are mostly eighth and sixteenth notes, some beamed together. There are several rests throughout the staff. The key signature has one sharp (F#), and the time signature is 6/8.

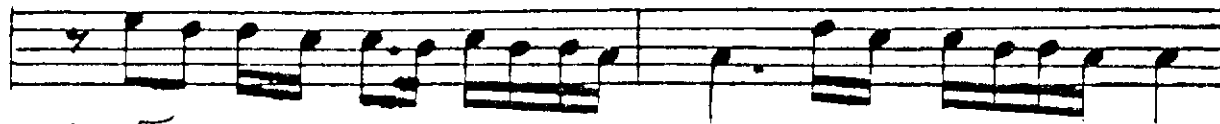
لا في ن ك دي ده مه بي ري كاري بو  
 bu ru xi gâ... re bû mededi n i n ki la



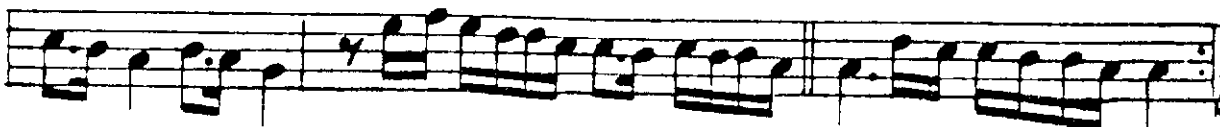
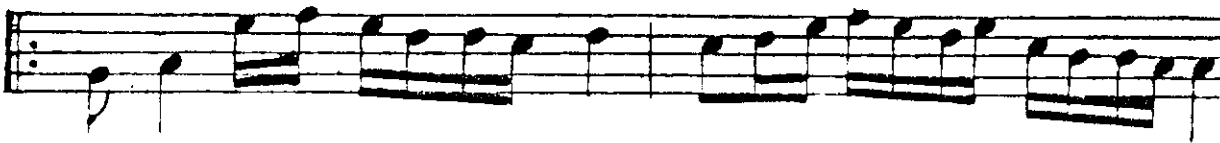
وار  
 var bu ru xi gâ... re bû me de di n



لا في ن ك دي ده مه بي ري كاري بو  
 i n ki la bu var



آره نغمه  
 Coda



Bou intidadi djévriné balitinchitabivar بوانداجو رکه نخت شتاب وار

Mihnet médar olan félequé inlissabivar محنت مه اراده فلكه انشاب وار

Eylér nésini lout fou bixé quirdibadi gam ایدر نیم لطفی بزه کرد باد غم

Bou rouxiquari bîmedédin inkilabi var بو روزگار مددک انقید وار